

Grangegorman

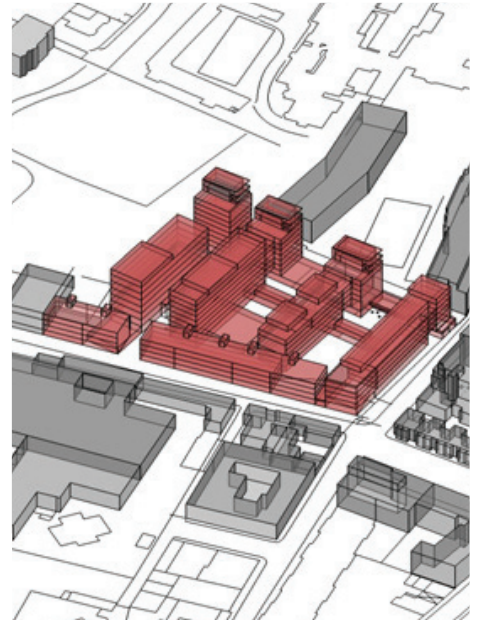
mixed-use case study



Located on the fringes of the DIT campus, this development is situated between the evolving and maturing Smithfield area and the regenerated Grangegorman-Broadstone area. This scheme integrates and links these two areas by providing a new pedestrian street running through 3 linear apartment blocks, dividing the sequential series of spaces that are passed through.

The development includes a new public landscaped square which features a café, restaurant and a number of relevant retail units. A new cultural art box gallery provides a key social link between the meeting place and the square.

Project:	Grangegorman
Category:	Mixed-Use
Client:	Albion Properties Ltd
Scale:	55,000m ²
Completed:	At Planning
Value:	€45m



Client Comment

Darmody Architecture's creative vision and ability to bring on board Dublin City Council Planners to buy into a robust development was massive achievement in gaining planning permission for such a successful commercial development.

Pascal Conroy
Director

Darmody Architecture
91 Townsend Street
Dublin 2
Ireland

353 1 672 9907
info@darmodyarchitecture.com
darmodyarchitecture.com

darmody
architecture

